

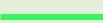




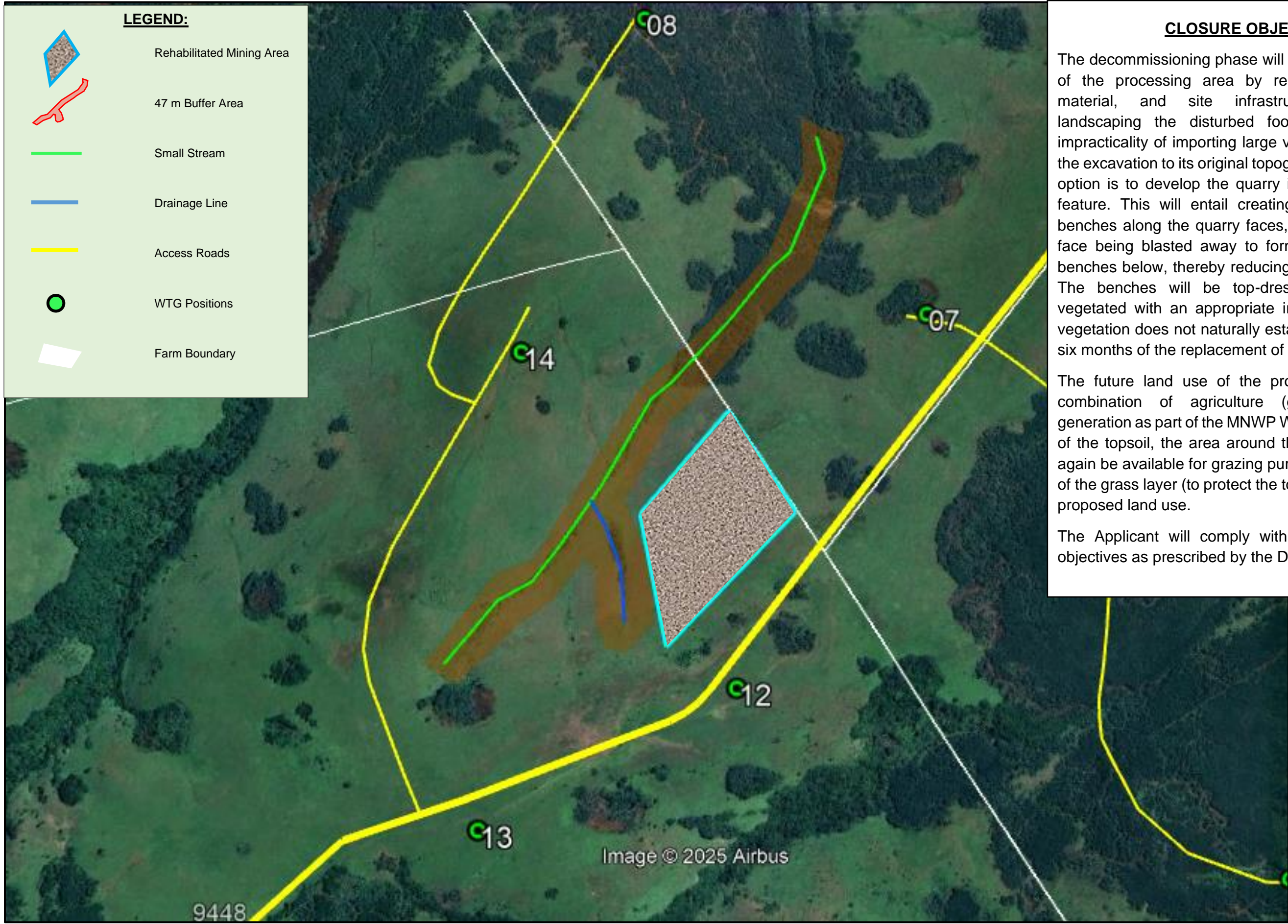


REHABILITATION MAP FOR THE MULILO NEWCASTLE MINING RIGHTS (PTY) LTD PROPOSED MINING PERMIT OVER THE FARM BYRON NO 9448, NEWCASTLE, KZN
KZN 30/5/1/3/2/11072 MP

LEGEND:

-  Rehabilitated Mining Area
-  47 m Buffer Area
-  Small Stream
-  Drainage Line
-  Access Roads
-  WTG Positions
-  Farm Boundary



CLOSURE OBJECTIVES

The decommissioning phase will entail the reinstatement of the processing area by removing the stockpiled material, and site infrastructure/equipment and landscaping the disturbed footprints. Due to the impracticality of importing large volumes of fill to restore the excavation to its original topography, the rehabilitation option is to develop the quarry into a minor landscape feature. This will entail creating a series of irregular benches along the quarry faces, the top edges of each face being blasted away to form scree slopes on the benches below, thereby reducing the overall face angle. The benches will be top-dressed with topsoil and vegetated with an appropriate indigenous grass mix if vegetation does not naturally establish in the area within six months of the replacement of the topsoil.

The future land use of the proposed area will be a combination of agriculture (grazing) and energy generation as part of the MNWP WEF. Upon replacement of the topsoil, the area around the excavation will once again be available for grazing purposes, and the planting of the grass layer (to protect the topsoil) will tie in with the proposed land use.

The Applicant will comply with the minimum closure objectives as prescribed by the DMRE.